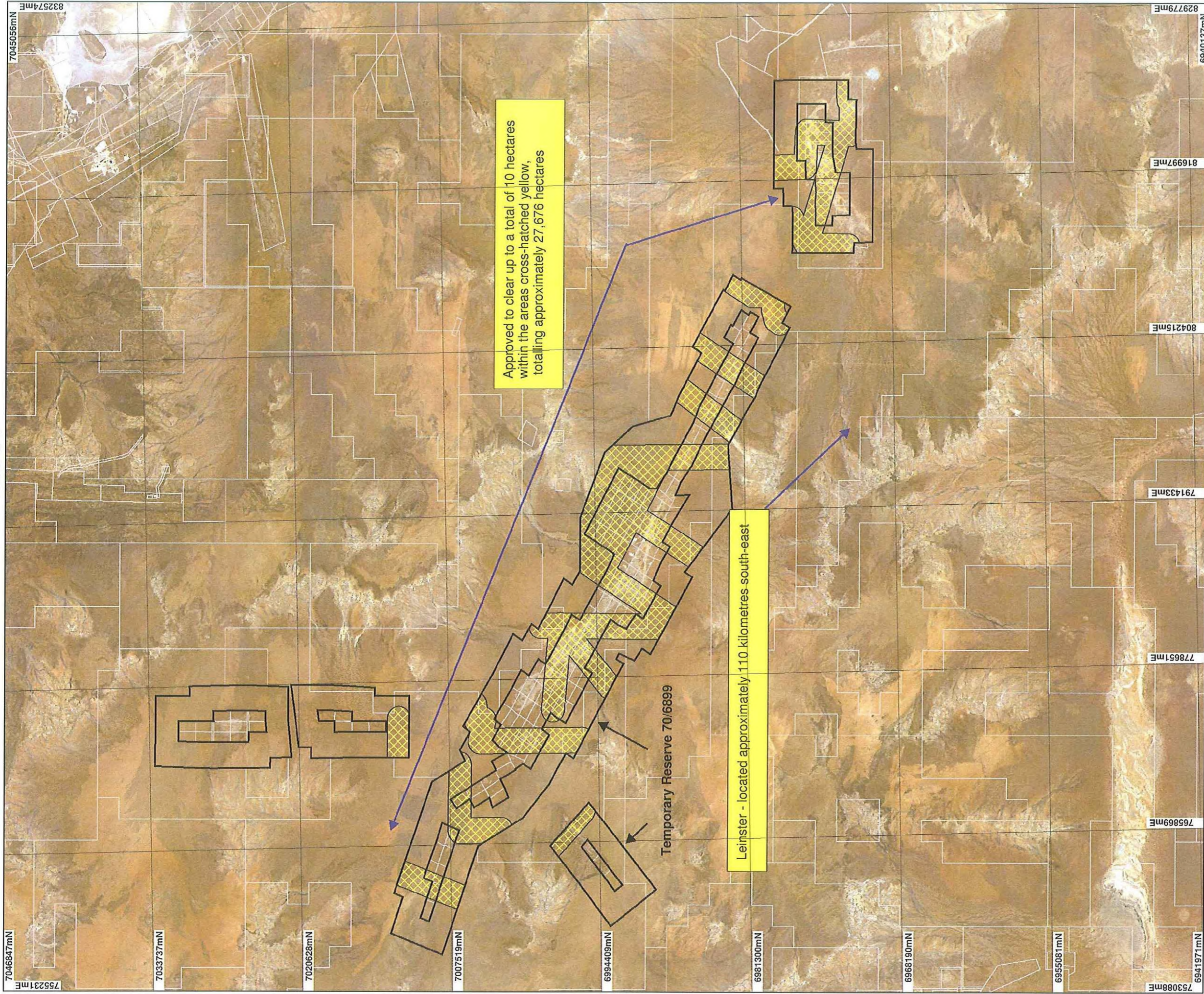


PLAN 2964/1



Approved to clear up to a total of 10 hectares within the areas cross-hatched yellow, totalling approximately 27,676 hectares

Leinster - located approximately 110 kilometres south-east

Temporary Reserve 70/6899

LEGEND

- Mining tenements
- Clearing instruments
- Areas Approved to Clear
- Western Australia ETM 25m 321 - 1999
- Mining tenements_1

Scale 1:300000
(Approximate when reproduced at A3)

Geocentric Datum Australia 1994

Note: the data in this map have not been projected. This may result in geometric distortion or measurement inaccuracies.

Phil Gorey
Officer with delegated authority under Section 20 of the Environmental Protection Act 1986

Date: 13/6/19

Information derived from this map should be confirmed with the data custodian, acknowledged by the agency acronym in the legend.

WA Crown Copyright 2002

* Project Data. This data has not been quality assured. Please contact map author for details.